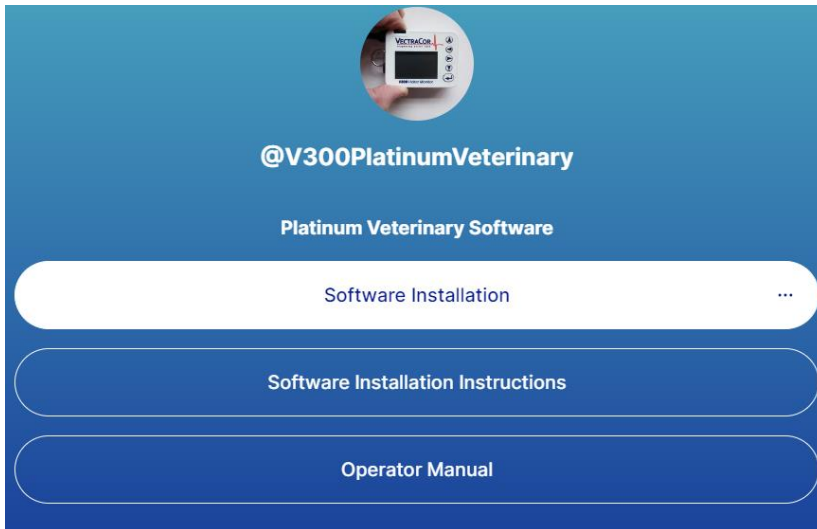


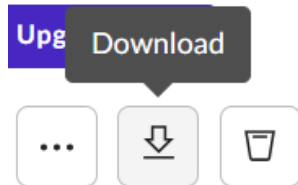
# V300 Holter Platinum Veterinary Cardiac Analysis Software Installation Instructions

---

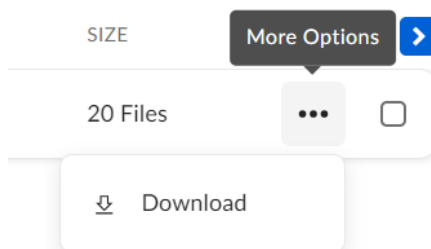
1. Confirm that the PC you are trying to install the software on has administrative privileges.
2. Open your web browser and navigate to: [www.linktr.ee/V300PlatinumVeterinary](http://www.linktr.ee/V300PlatinumVeterinary)
3. Click on “Software Installation”.



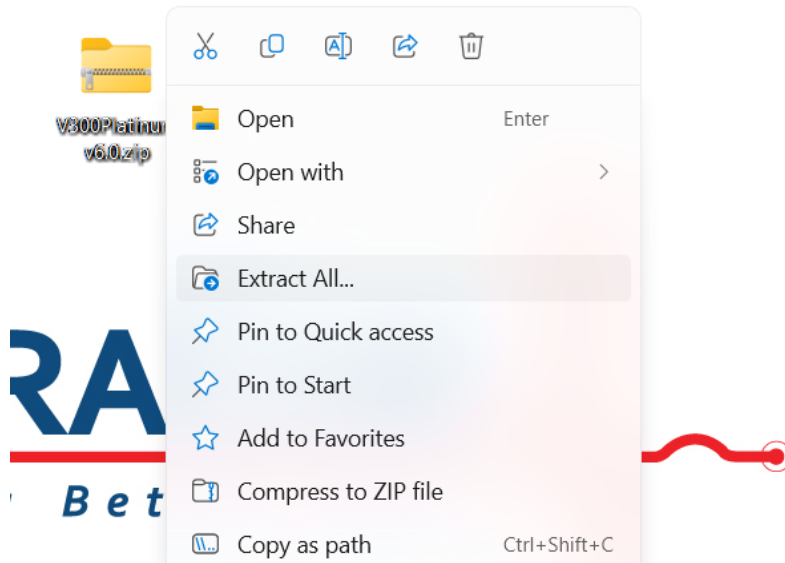
4. Download the folder titled “V300PlatinumVeterinary v6.0”.  
You can either:
  - a. Select the file (check the checkbox) and click the button which is located on the top right of the screen



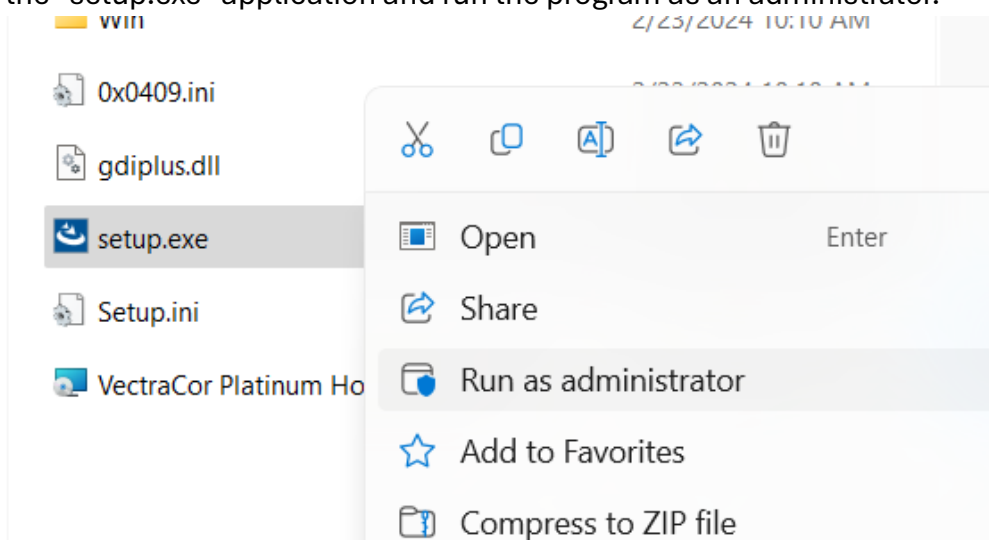
- b. Click the three dots and click “Download”



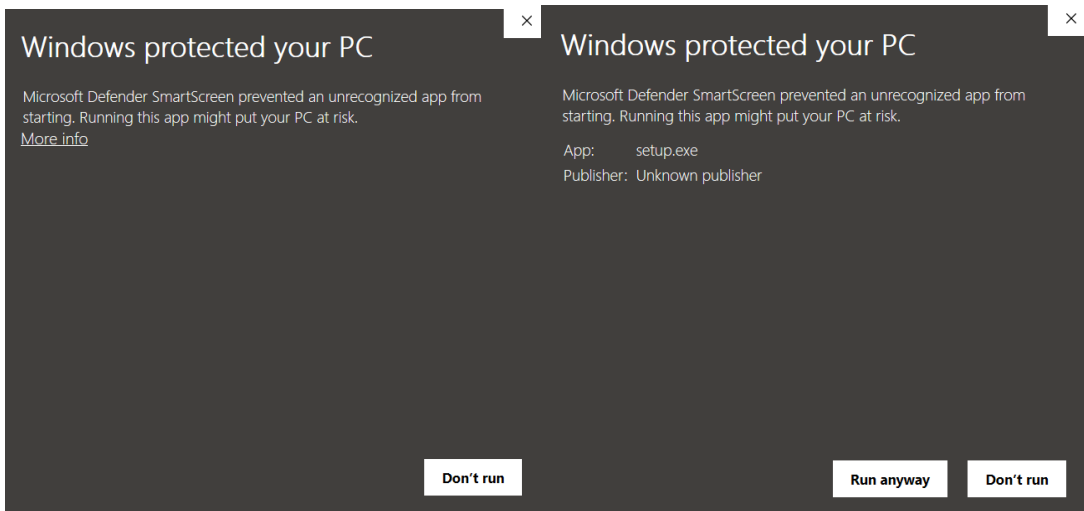
5. Right-click the folder named “V300Platinum v6.0.zip” and “Extract All...”



6. Open the newly extracted folder and locate the “setup.exe” application. Right-click the “setup.exe” application and run the program as an administrator.



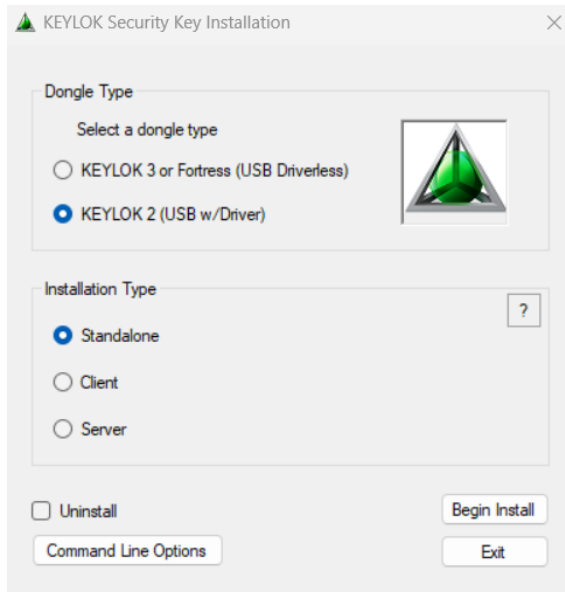
7. You may get a Windows Defender SmartScreen pop-up message: Click “More info”  
→ “Run anyway”



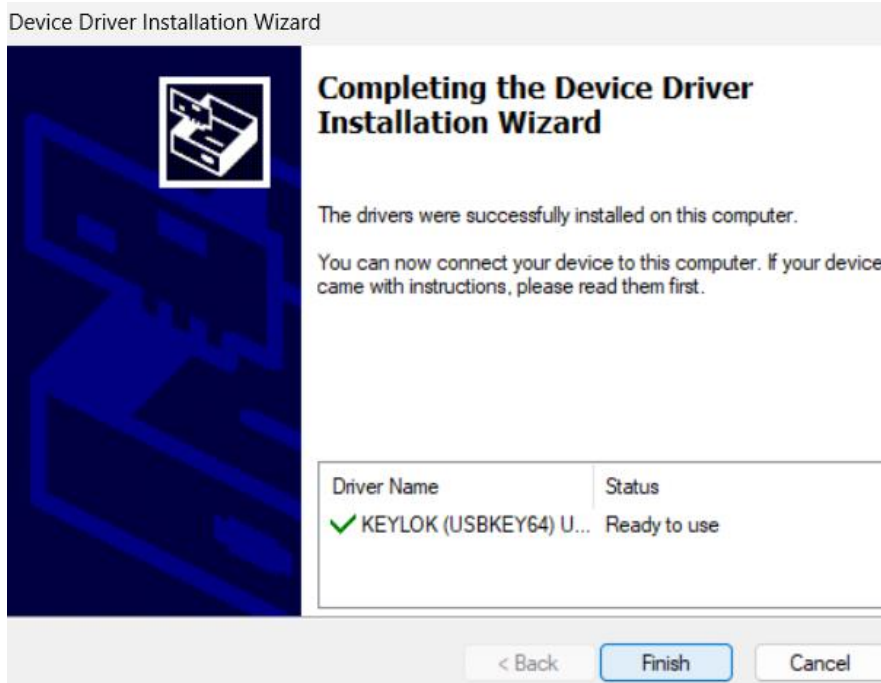
8. Click “Yes” when prompted with this window:



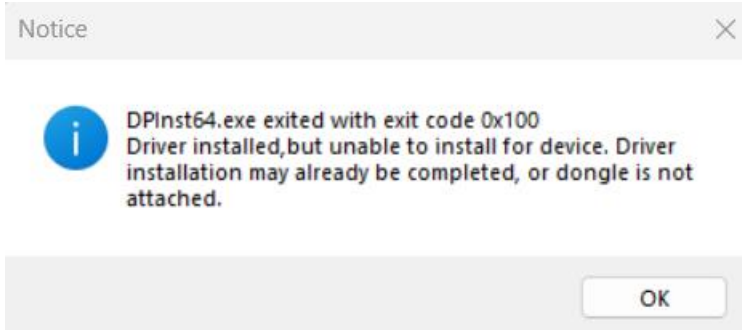
9. Install the KEYLOK Driver and select “KEYLOK2 (USB w/ Driver)” for the dongle type & “Standalone” as the installation type.



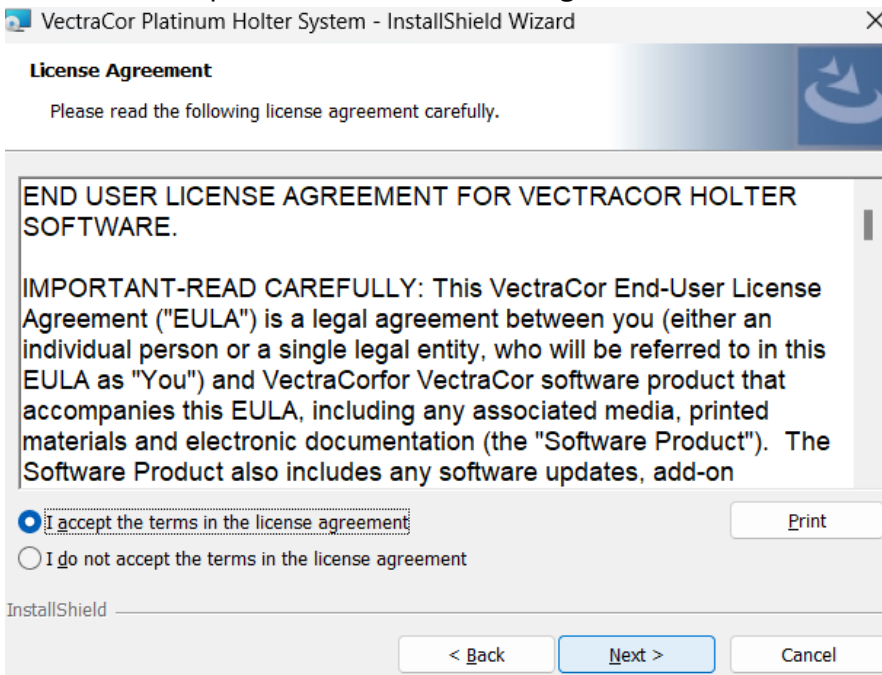
10. Complete the Device Driver Installation.



11. You may get the error message below; this is expected and will not affect the functionality of the Dongle or software.



12. Read and accept the End User License Agreement.



### 13. Enter in Customer Information.

VectraCor Platinum Holter System - InstallShield Wizard

**Customer Information**

Please enter your information.

User Name:  
User Name

Organization:  
VectraCor

InstallShield

< Back   Next >   Cancel

### 14. Choose a “Complete” installation for the setup type.

VectraCor Platinum Holter System - InstallShield Wizard

**Setup Type**

Choose the setup type that best suits your needs.

Please select a setup type.

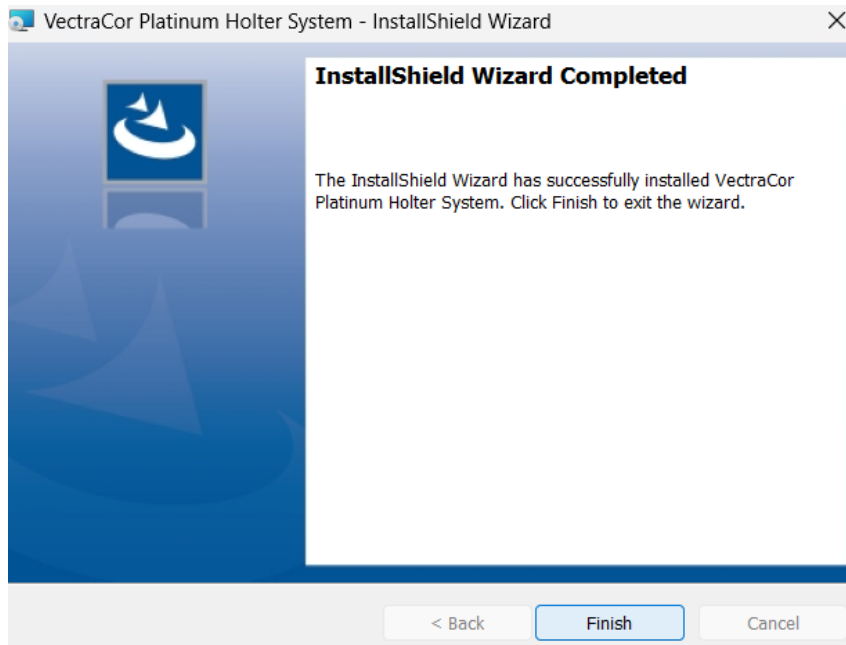
**Complete**  
All program features will be installed. (Requires the most disk space.)

**Custom**  
Choose which program features you want installed and where they will be installed. Recommended for advanced users.

InstallShield

< Back   Next >   Cancel

## 15. Complete Software Installation



16. Navigate to the desktop for your software and for PDF files of the User Manual and Electrode Placement Guide,

