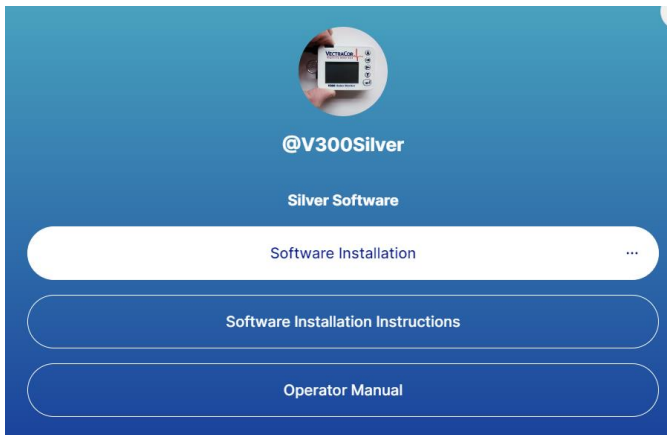
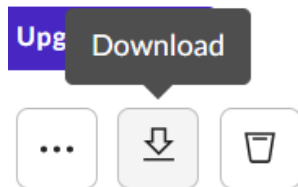


V300 Holter Silver Cardiac Analysis Software Installation Instructions

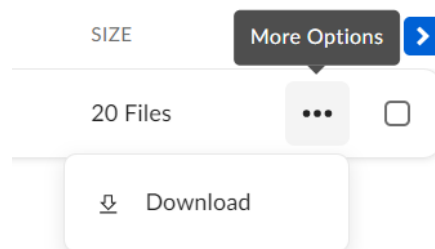
1. Confirm that the PC you are trying to install the software on has administrative privileges.
2. Open your web browser and navigate to: www.linktr.ee/V300Silver
3. Click on “Software Installation”.



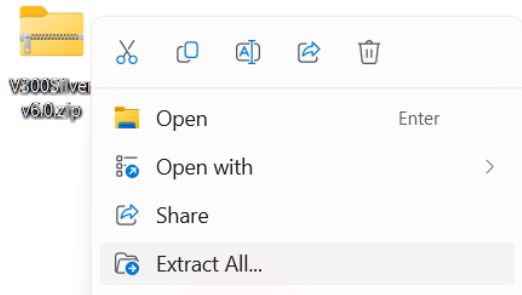
4. Download the folder titled “V300Silver v6.0”.
You can either:
 - a. Select the file (check the checkbox) and click the button which is located on the top right of the screen



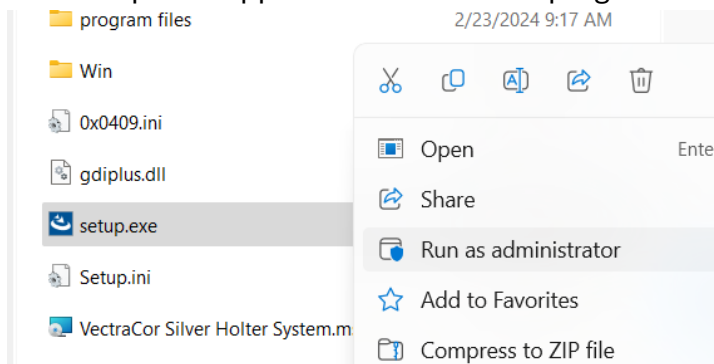
- b. Click the three dots and click “Download”



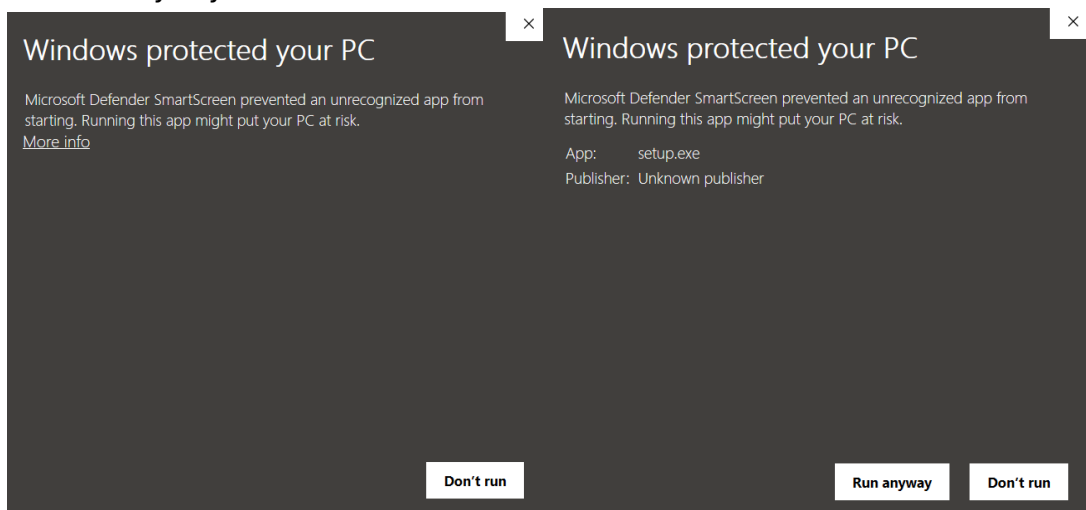
5. Right-click the folder named “V300Silver v6.0.zip” and “Extract All...”



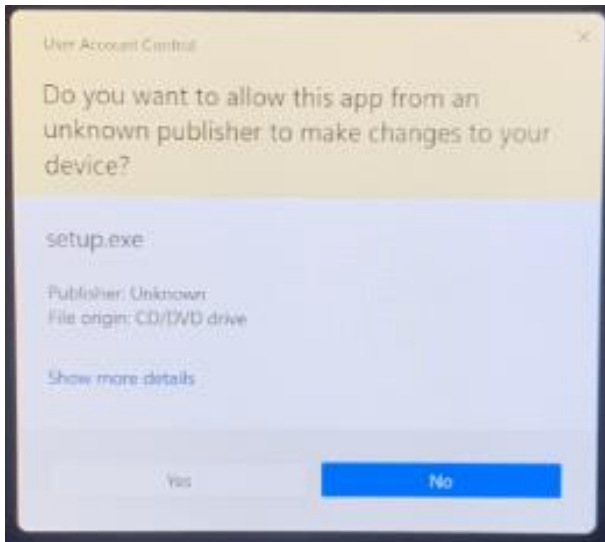
6. Open the newly extracted folder and locate the “setup.exe” application. Right-click the “setup.exe” application and run the program as an administrator.



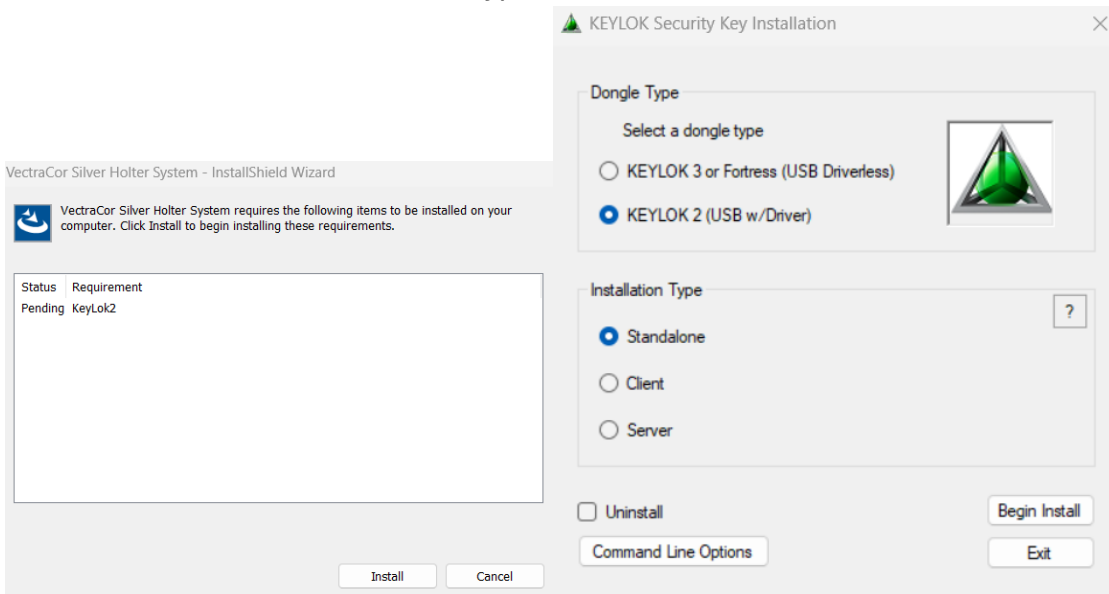
7. You may get a Windows Defender SmartScreen pop-up message: Click “More info” → “Run anyway”



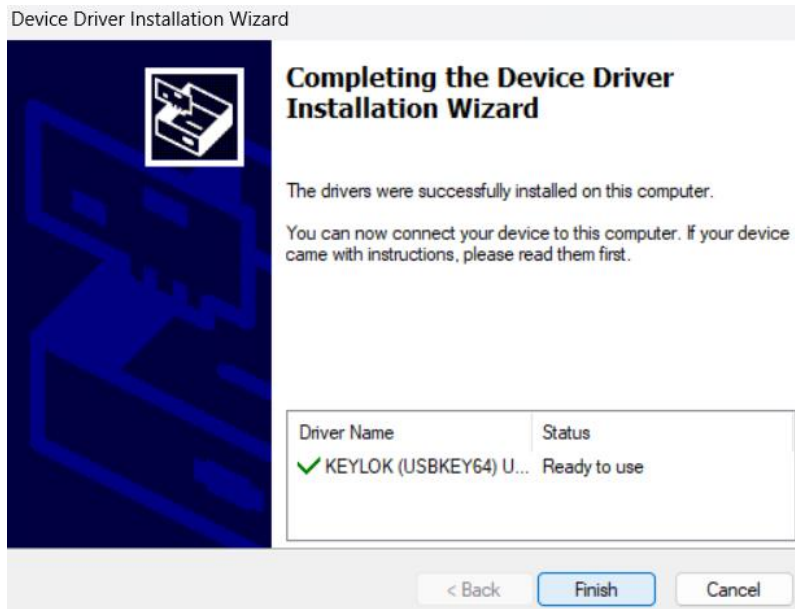
8. Click “Yes” when prompted with this window:



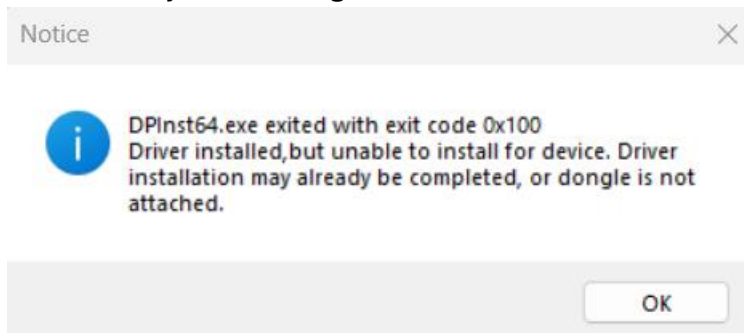
9. Install the KEYLOK Driver and select “KEYLOK2 (USB w/ Driver)” for the dongle type & “Standalone” as the installation type.



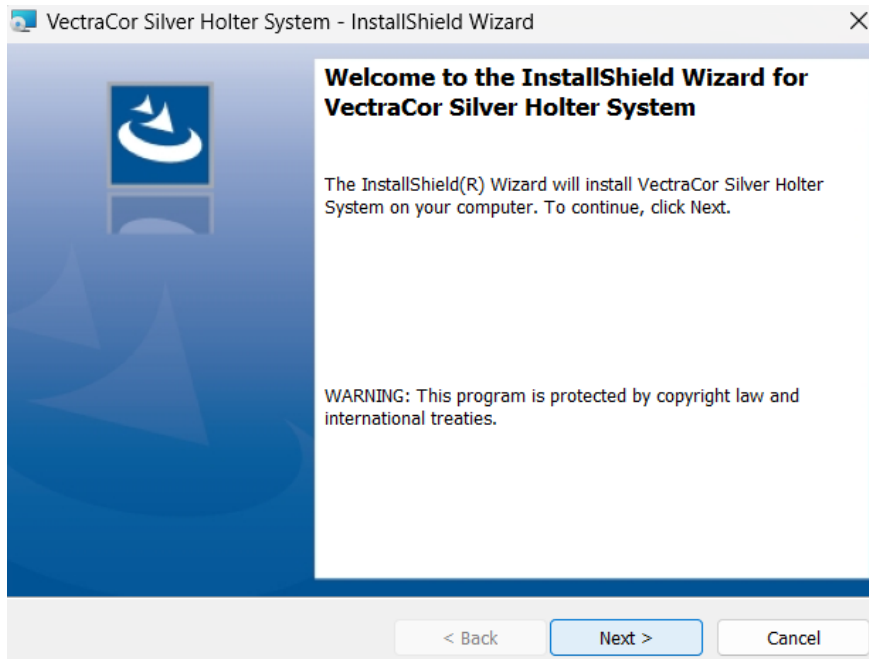
10. Complete the Device Driver Installation.



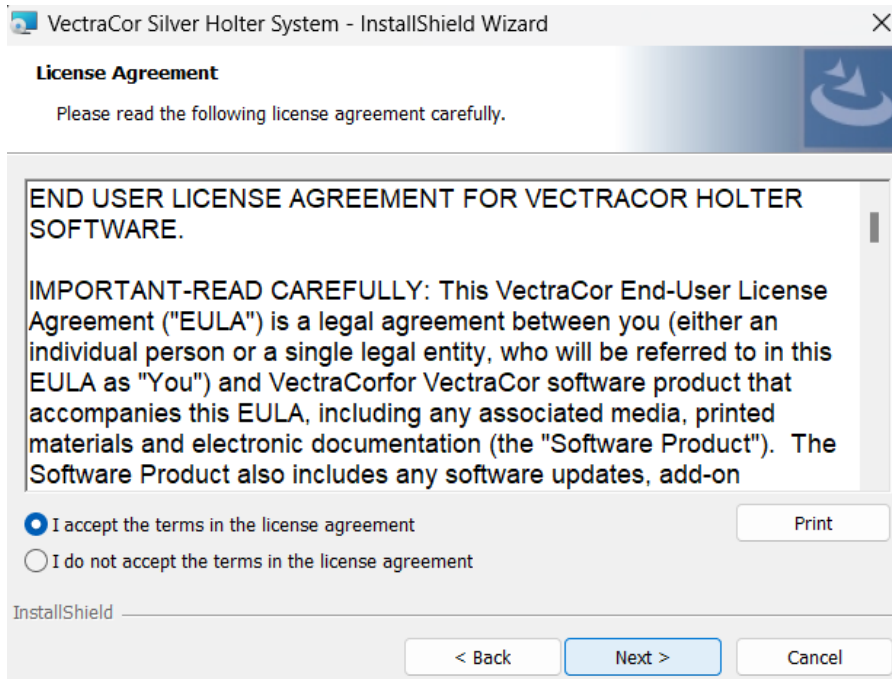
11. You may get the error message below; this is expected and will not affect the functionality of the Dongle or software.



12. Proceed to install the V300 Holter Software.



13. Read and accept the End User License Agreement.



14. Enter in Customer Information.

The screenshot shows the 'Customer Information' step of the installation wizard. The window title is 'VectraCor Silver Holter System - InstallShield Wizard'. The main heading is 'Customer Information' with a sub-instruction 'Please enter your information.' Below this, there are two text input fields: 'User Name' with the text 'User Name' entered, and 'Organization' with the text 'VectraCor' entered. At the bottom of the window, there are three buttons: '< Back', 'Next >', and 'Cancel'. The 'Next >' button is highlighted in blue.

15. Choose a “Complete” installation for the setup type.

The screenshot shows the 'Setup Type' step of the installation wizard. The window title is 'VectraCor Silver Holter System - InstallShield Wizard'. The main heading is 'Setup Type' with a sub-instruction 'Choose the setup type that best suits your needs.' Below this, there is a sub-instruction 'Please select a setup type.' and two radio button options, each with a small icon of a computer tower. The first option is 'Complete', which is selected (radio button is filled with a blue dot). Its description is 'All program features will be installed. (Requires the most disk space.)'. The second option is 'Custom', which is not selected (radio button is empty). Its description is 'Choose which program features you want installed and where they will be installed. Recommended for advanced users.' At the bottom of the window, there are three buttons: '< Back', 'Next >', and 'Cancel'. The 'Next >' button is highlighted in blue.

16. Complete Software Installation



17. Navigate to the desktop for your software and for PDF files of the User Manual and Electrode Placement Guide,

