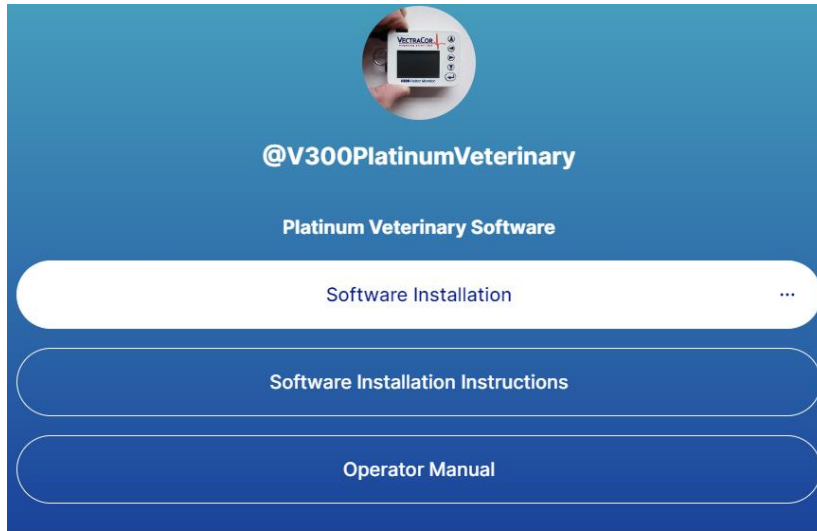
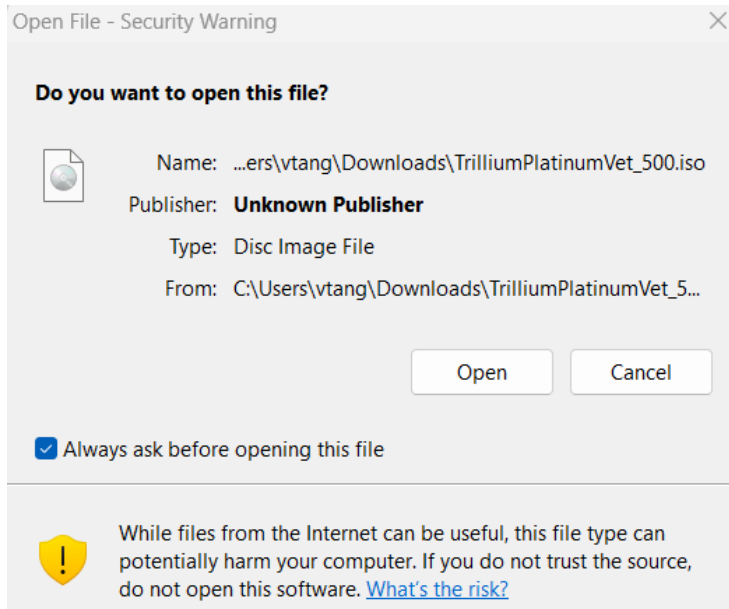


V300 Holter Platinum Veterinary Cardiac Analysis Software Installation Instructions

1. Open your web browser and navigate to: www.linktr.ee/V300PlatinumVeterinary
2. Click on “Software Installation”



3. Click on the file “TrilliumPlatinumVet_500.iso”
4. Click download on the top right.
5. Open the file and click “Open” when prompted with this window:



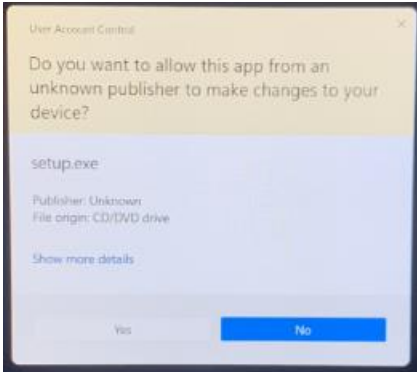
6. Find the “setup” application and run as administrator. (Make sure you are opening the application and not the configuration settings.)

📁 Holter Data	11/30/2023 3:26 PM	File folder
📁 program files	11/30/2023 3:27 PM	File folder
📁 System32	11/30/2023 3:28 PM	File folder
📁 Win	11/30/2023 3:28 PM	File folder
📄 0x0409	11/2/2023 7:45 PM	Configuration setti...
📄 Autorun	11/2/2023 7:45 PM	Setup Information
📄 instmsiw	11/2/2023 7:45 PM	Application
📄 setup	11/2/2023 7:45 PM	Application
📄 Setup	11/2/2023 7:45 PM	Configuration setti...
📄 Trillium Platinum Vet	11/2/2023 7:45 PM	Windows Installer ...

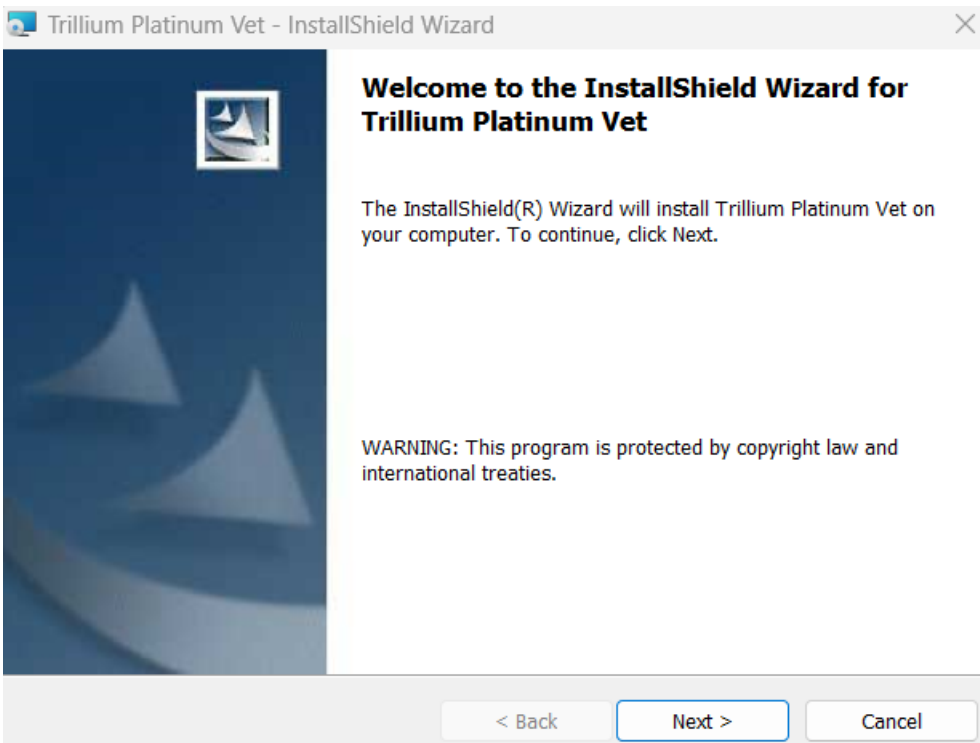
7. You may get an error message: click “More info” → “Run anyway”



8. Click “Yes” when prompted with this window:

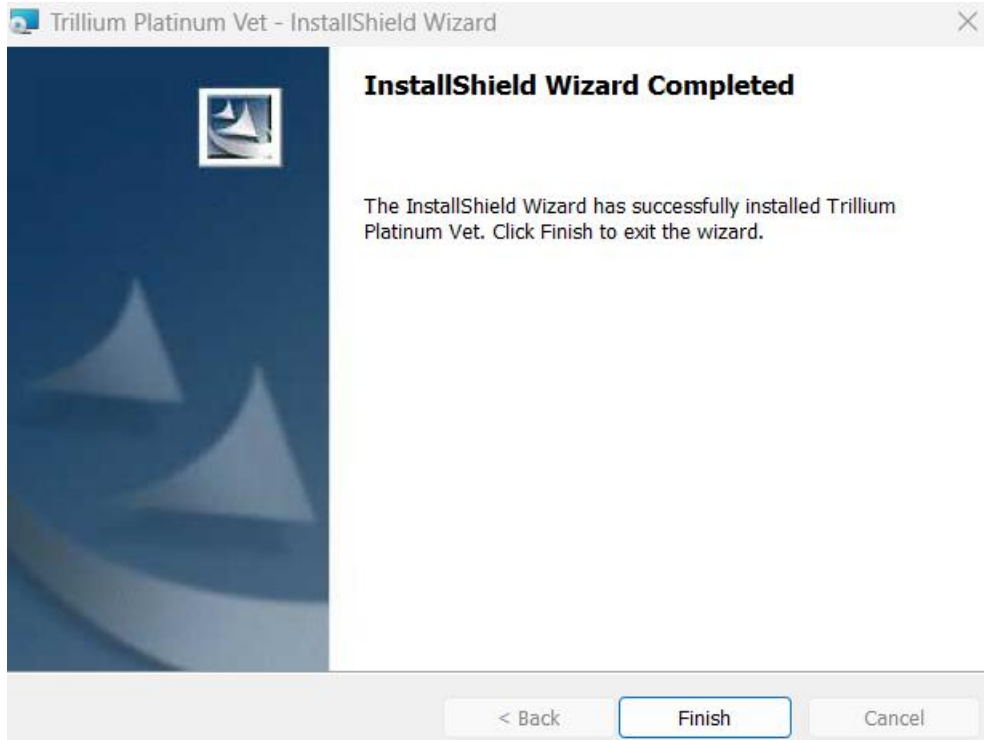


9. Click Next.



10. Choose whether the software is installed for a specific user account or the PC.

11. Click Finish



12. You should be able to find your newly downloaded software on the desktop.