

Patient ID: STEMI
0 yrs 8/24/2017 Male
0 in 0 lbs
Recorded: 8/23/2017 1:29:53 PM
Blood Pressure
Race: Unknown
Packs/Day: 0

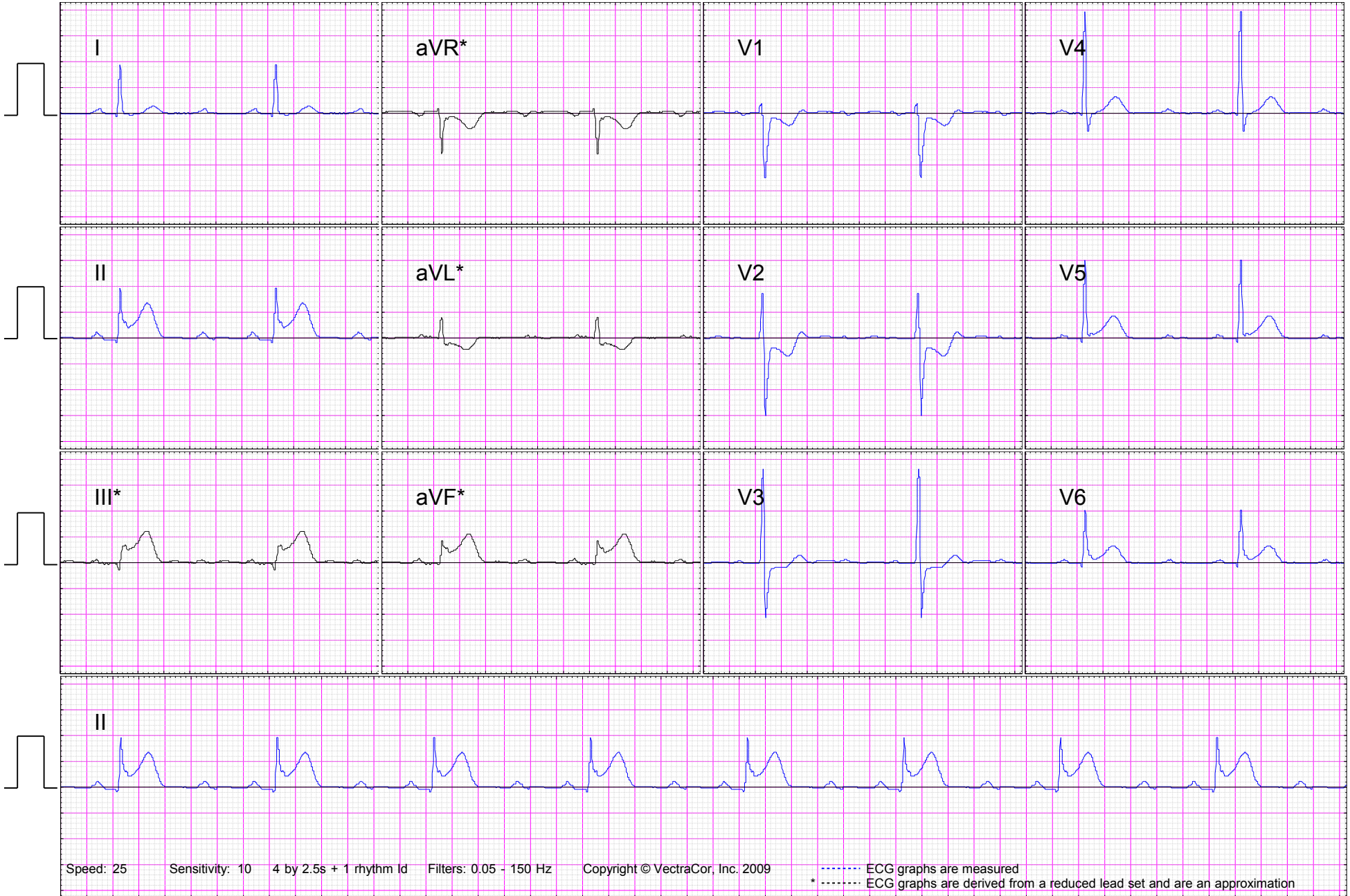
Heart Rate 50 bpm
P duration (ms) 116 ms
PR interval 192 ms
QRS duration 102 ms
QT/QTc 388/354 ms
P-R-T axes 50° 28° 78°

RR interval 1200 ms
Comments:
Referred by:
Confirmed by:
Device # CL
Medications

1/10/2018 12 Lead ECG

1 of 3

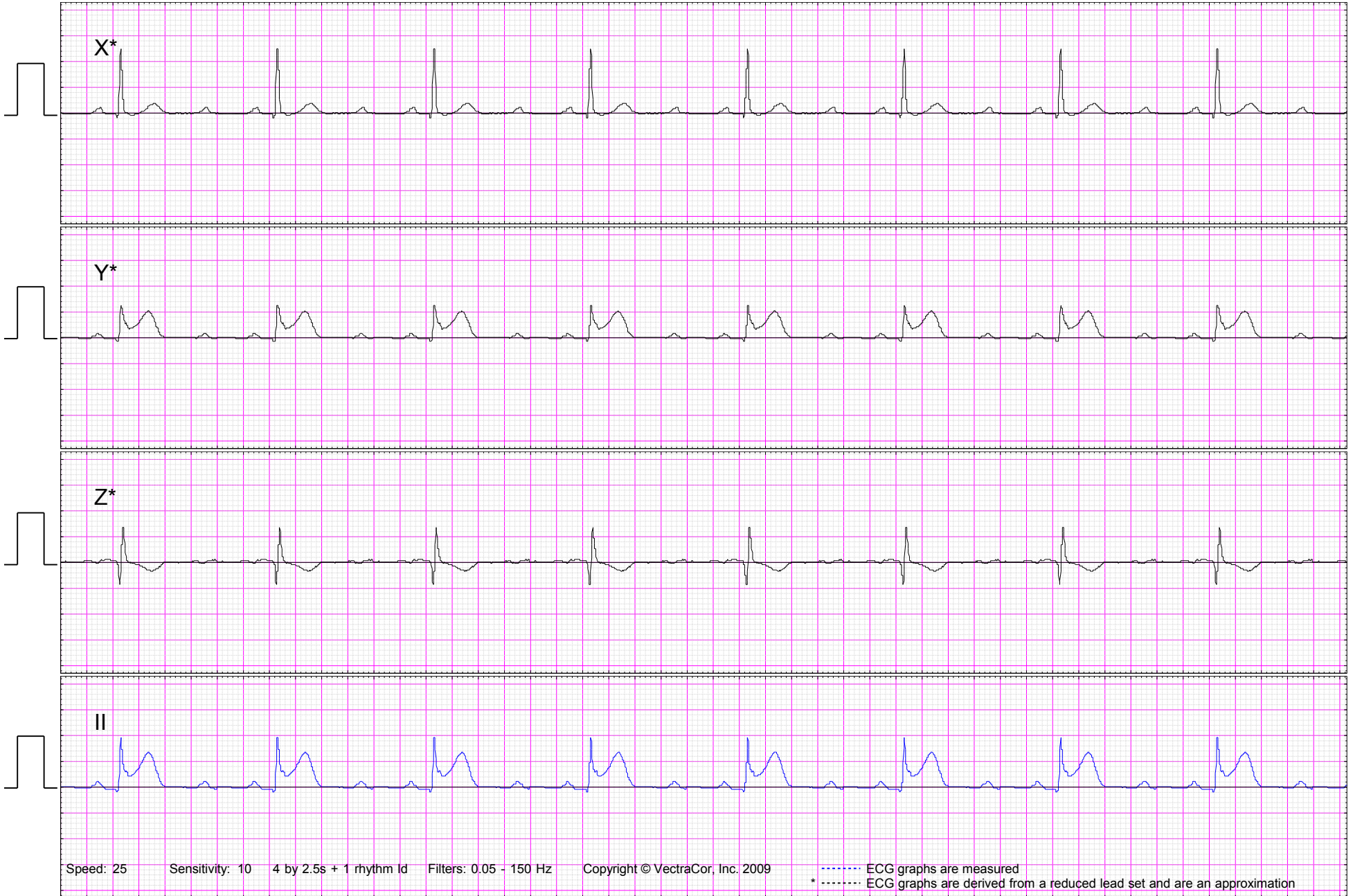
Interpretation (unconfirmed):
005 Sinus bradycardia
231 Ischemic ST-T changes compatible with epicardial injury in inferior leads
243 Ischemic ST-T changes in anterior leads
263 Ischemic ST-T changes compatible with subendocardial injury in anterior leads



Patient ID: STEMI
0 yrs 8/24/2017 Male
0 in 0 lbs
Recorded: 8/23/2017 1:29:53 PM
Blood Pressure
Race: Unknown
Packs/Day: 0

Heart Rate 50 bpm
P duration (ms) 116 ms
PR interval 192 ms
QRS duration 102 ms
QT/QTc 388/354 ms
P-R-T axes 50° 28° 78°

RR interval 1200 ms
Comments:
Referred by:
Confirmed by:
Device # CL
Medications



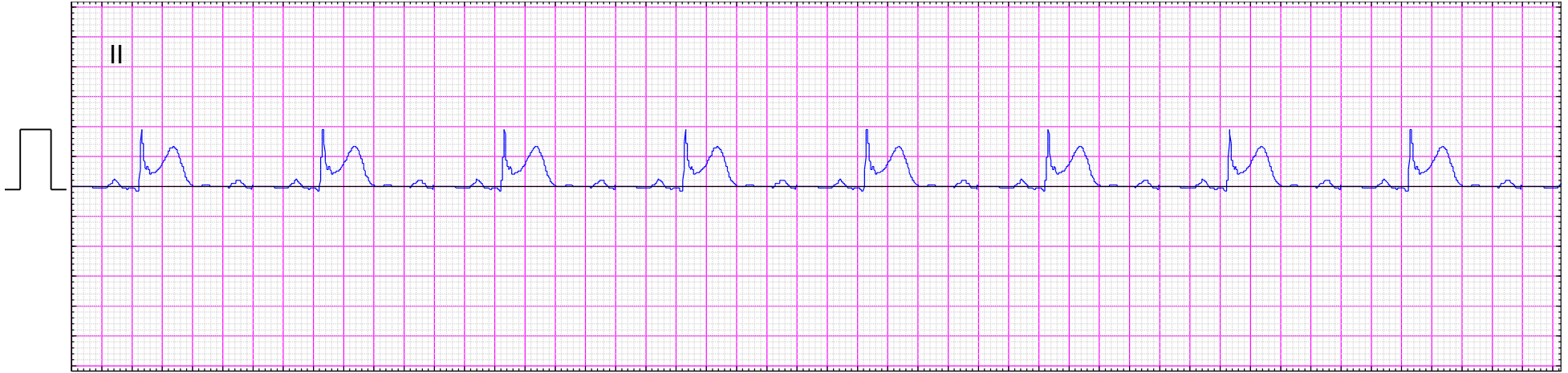
Patient ID: STEMI
 0 yrs 8/24/2017 Male
 0 in 0 lbs
 Recorded: 8/23/2017 1:29:53 PM
 Blood Pressure
 Race: Unknown
 Packs/Day: 0

Heart Rate 50 bpm
 P duration (ms) 116 ms
 PR interval 192 ms
 QRS duration 102 ms
 QT/QTc 388/354 ms
 P-R-T axes 50° 28° 78°

RR interval 1200 ms
 Comments:
 Referred by:
 Confirmed by:
 Device # CL
 Medications

Interpretation (unconfirmed):
 005 Sinus bradycardia
 231 Ischemic ST-T changes compatible with epicardial injury in inferior leads
 243 Ischemic ST-T changes in anterior leads
 263 Ischemic ST-T changes compatible with subendocardial injury in anterior leads

Lead	Amplitude (µV)								Slope (µV/s)				Duration (ms)						
	P+	P-	Q	R	S	R'	S'	J	ST20	ST60	ST80	T+	T-	ST	Q1	R1	S1	R'1	S'1
I	93	0	-49	943	0	0	0	-16	-22	-13	2	140	0	0	8	90	0	0	0
II	150	0	-54	987	0	0	0	239	259	343	435	708	0	5000	16	84	0	0	0
III	74	0	-134	348	0	0	0	254	280	355	432	623	0	5000	34	66	0	0	0
aVR	0	-114	0	58	-965	0	0	-112	-119	-165	-219	0	-401	-2500	0	14	84	0	0
aVL	49	0	-22	452	-170	0	0	-135	-151	-184	-215	0	-282	-2500	8	40	50	0	0
aVF	111	0	-31	516	0	0	0	247	270	349	434	662	0	5000	16	84	0	0	0
V1	0	-64	0	158	-1276	0	0	-123	-117	-138	-177	0	-257	-2250	0	26	74	0	0
V2	0	-25	0	871	-1517	0	0	-200	-200	-230	-278	108	-352	0	0	40	60	0	0
V3	48	0	0	1813	-1065	0	0	-114	-99	-84	-90	134	0	0	0	40	52	0	0
V4	56	0	-50	1952	-359	0	0	-14	-8	41	86	314	0	750	10	40	50	0	0
V5	56	0	-77	1509	0	0	0	74	89	142	217	436	0	2250	16	84	0	0	0
V6	60	0	-79	1032	0	0	0	72	72	117	176	336	0	3500	16	84	0	0	0



x1.12

